

David Wozniak, CMT  
Chief Market Strategist

Trading Floor Research  
[www.tfrtrader.com](http://www.tfrtrader.com)

Briefing.com  
Market Technician

[David.Wozniak@tfrtrader.com](mailto:David.Wozniak@tfrtrader.com)



# Essential Lessons for Stock Market Success



# Essential Lessons for Stock Market Success

(Class 2)

## CAN SLIM

Market,

Quarterly & Annual Earnings, Something New

IPOs & SPACs,

Supply & Demand, Leaders & Laggards,

Institutions Sponsorship

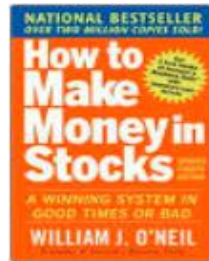
Instructor

David J Wozniak, CMT

# CAN SLIM

## Putting Fundamental & Technical Analysis Together

William J. O'Neil : How to Make Money In Stocks





CAN SLIM

## Market Direction

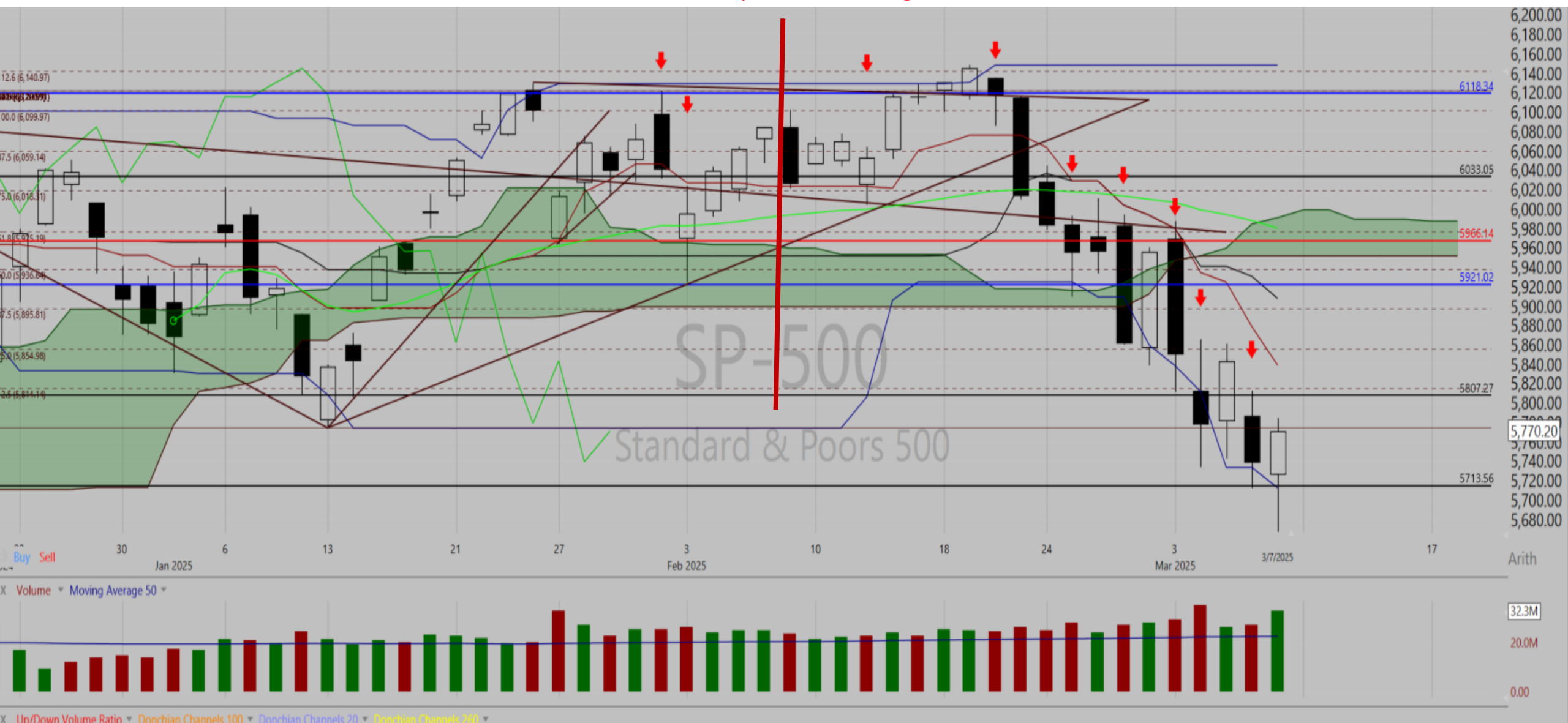
Market Direction (Market Bottoms & Market Tops)



## Market Tops

- Market tops are always preceded by signs of weakness in the major market averages. This weakness is defined by days of heavy selling. When the market index closes down, and the volume for the index increases over the previous day, the market is said to be under “distribution”.
- Several of these “distribution days” (five or more) in a short amount of time (20 trading days) is cause for concern.
- 
- Often, the leading stocks in the market will show signs of topping while the market shows signs of distribution.

S&P 500 Distribution Count  
7 in the past 20 trading sessions

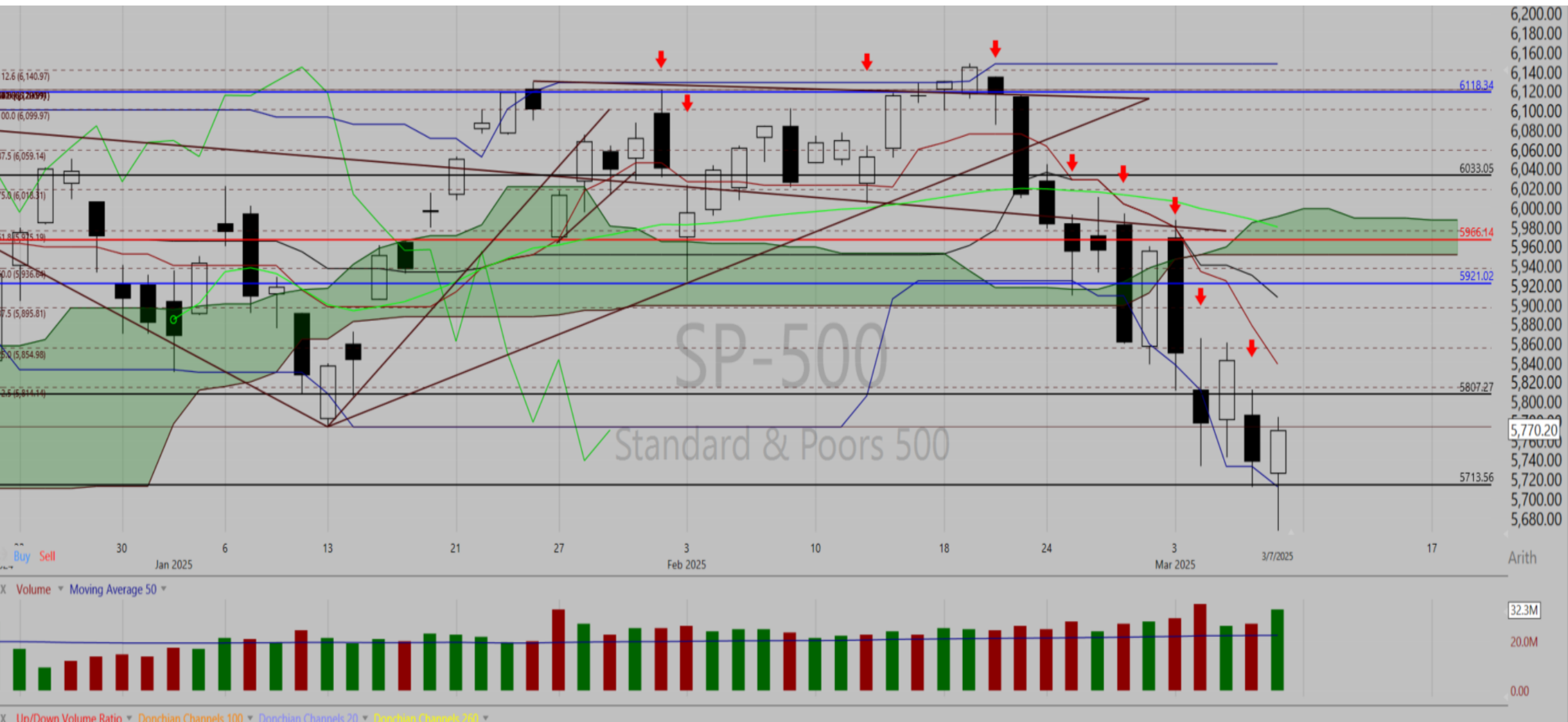


# Market Bottom

- The general market direction is said to make up 50% of a stock's move. You want to be investing in stocks during a bull market when the market is in a **confirmed-up trend**.
- This "**confirmation**" occurs when a major market average "follows through" on its rally 4-12 days after the rally begins.
- The "**follow-through day**" happens when one of the major market averages moves up over 1.5% on heavier volume than the previous day.
- All days of the rally do not need to be up.  
Some may be down. However, the low of the most current rally must not be under-cut, or the rally should be considered a failure.

# Market (Follow-through Day)

Watching for a Follow-through Day

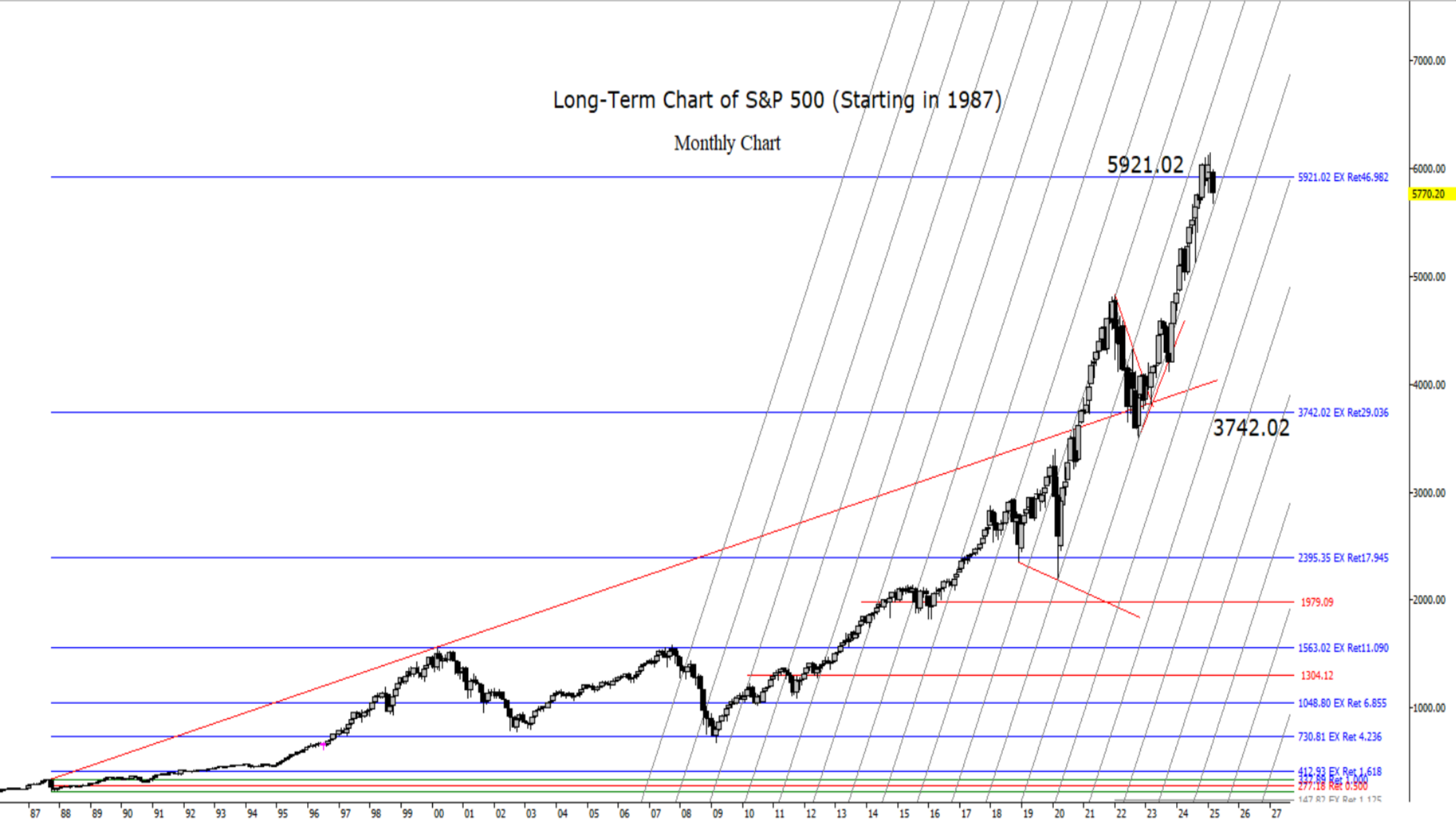


# Market (Follow-through Day) Fibonacci Targets



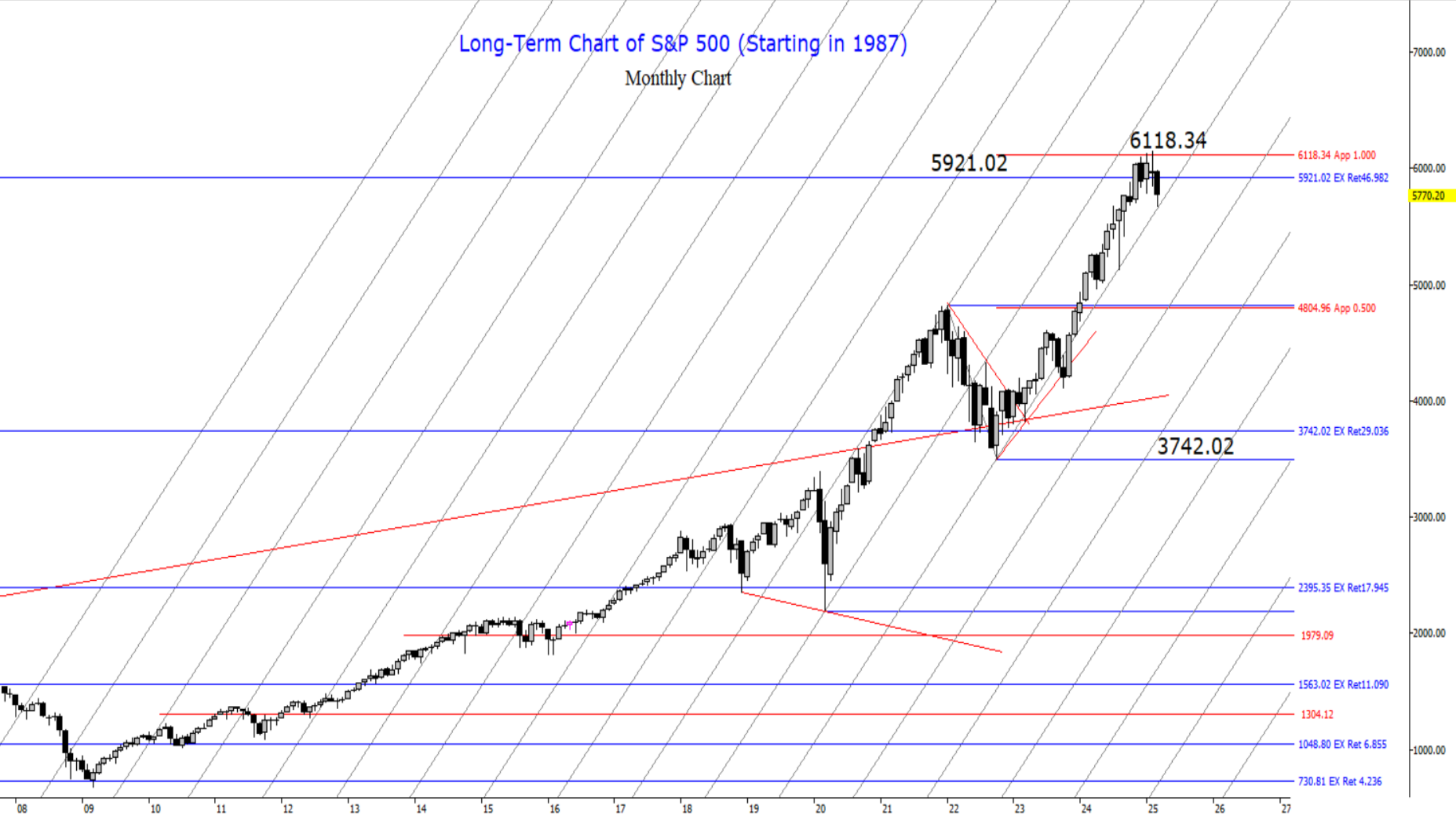
# Long-Term Chart of S&P 500 (Starting in 1987)

Monthly Chart



# Long-Term Chart of S&P 500 (Starting in 1987)

Monthly Chart

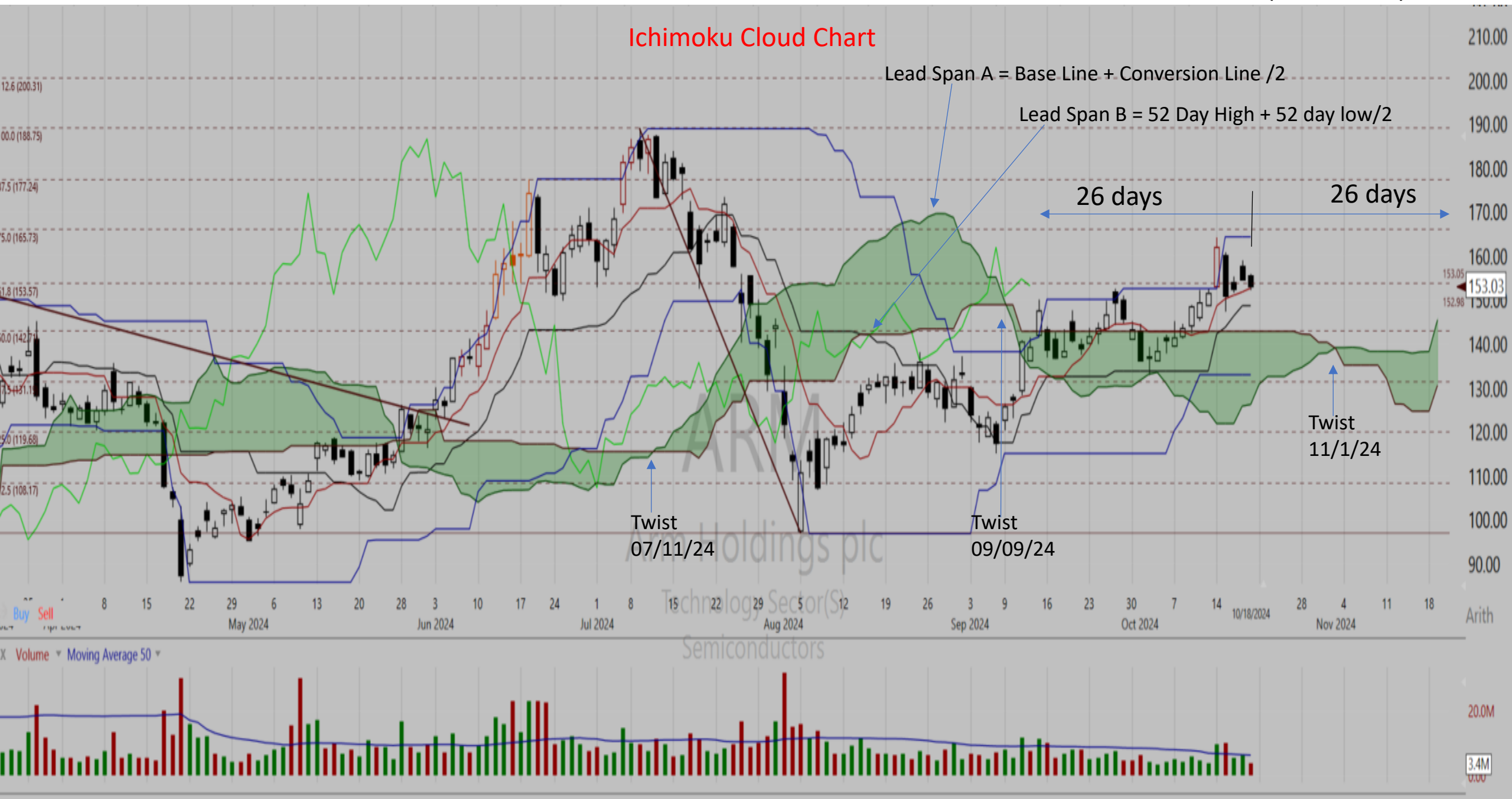




# Arm Holdings (ARM)

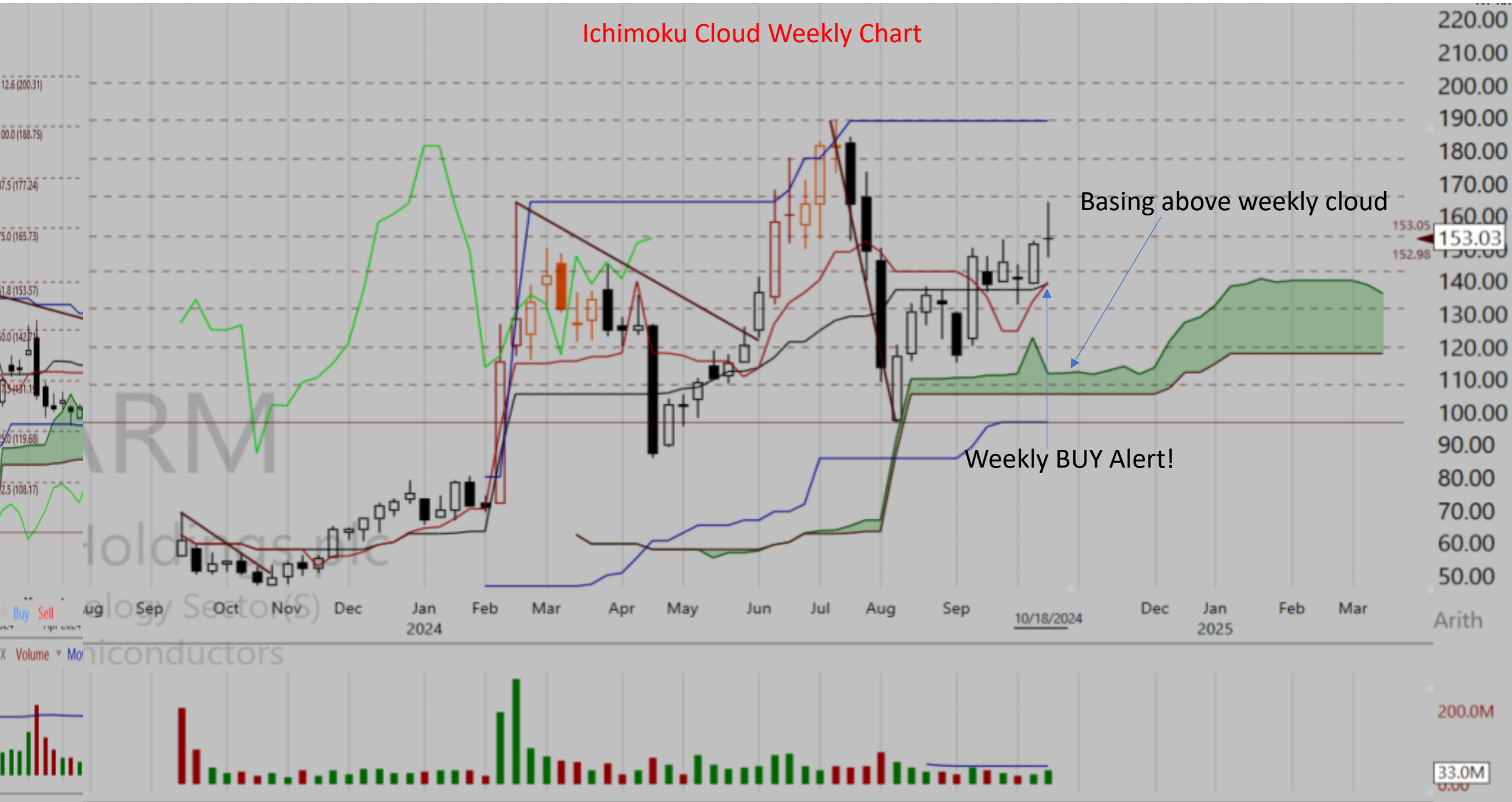
# Goichi Hosoda (1898-1982)

## Ichimoku Cloud Chart





## Ichimoku Cloud Weekly Chart



# Ichimoku Cloud Weekly Chart

Gold Resources Corp. (GORO)



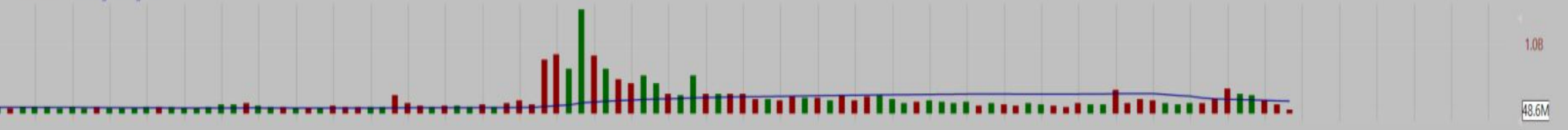


# Ichimoku Cloud Monthly Chart

Boeing Co. (BA)

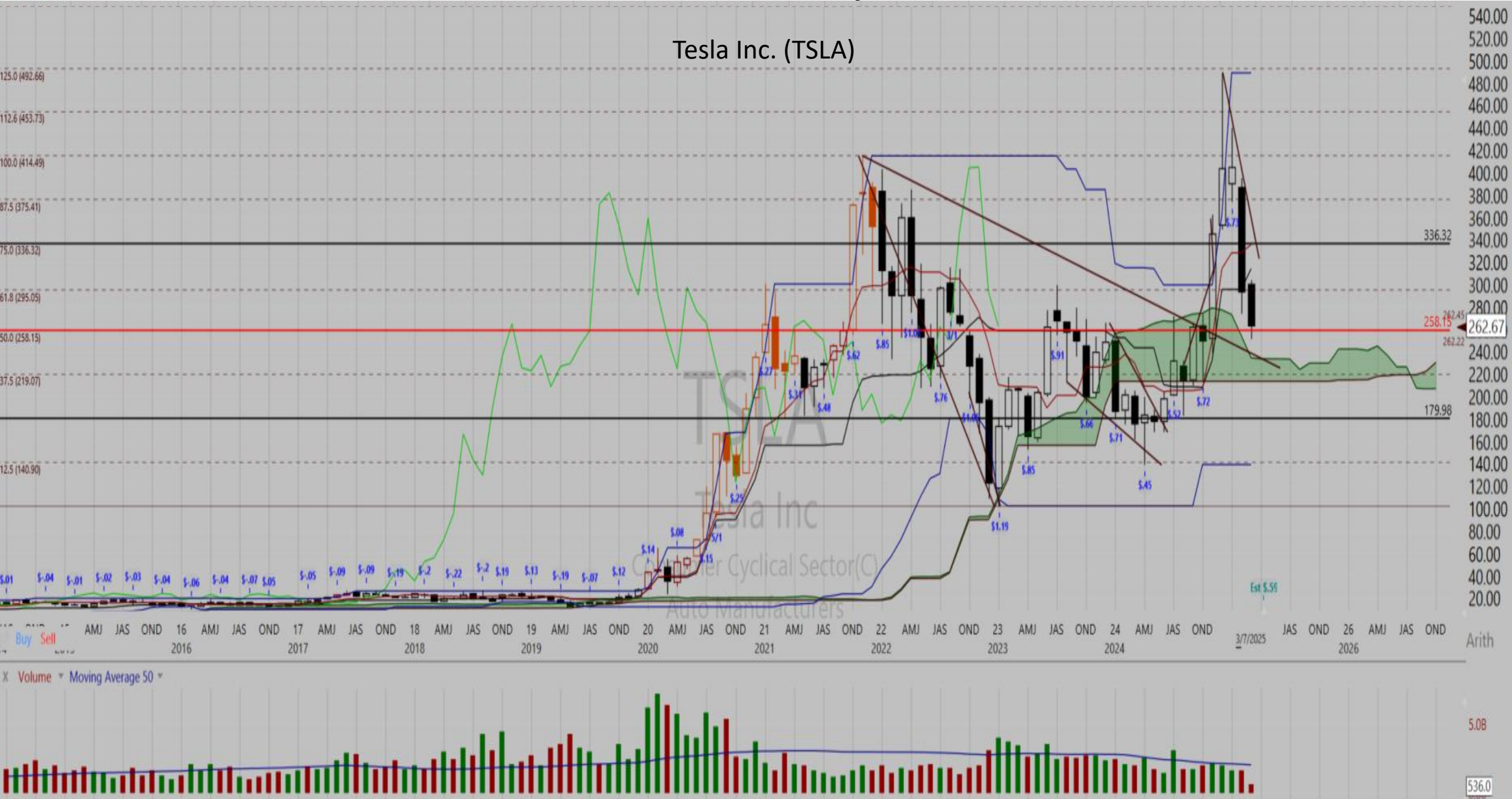


X Volume ▾ Moving Average 50 ▾



# Ichimoku Cloud Monthly Chart

Tesla Inc. (TSLA)



## What Makes A Stock Move

1. **Huge Profits** (Earnings)
2. **Industry Group Leadership**  
Leadership of an Industry Group (37%) & Sector (12%)  
(49% of individual stocks movement)
3. **Sponsorship from Institutions**: Mutual Funds, Hedge Funds, Banks, Pensions, Insurance Companies, and Family Offices. (VOLUME)

CAN SLIM



# CAN SLIM

Market Direction

Current Earnings (Quarterly Earnings)



# Current Earnings (Quarterly Earnings)

Root CIA (ROOT) NASDAQ Insurance-Prop/Cas/Titl (43/197)  
[www.joinroot.com](http://www.joinroot.com)

Average Daily Volume 503,200

Market Closed  
7:59 PM ET 03/07/25

\$136.99 +3.11  
2.32%

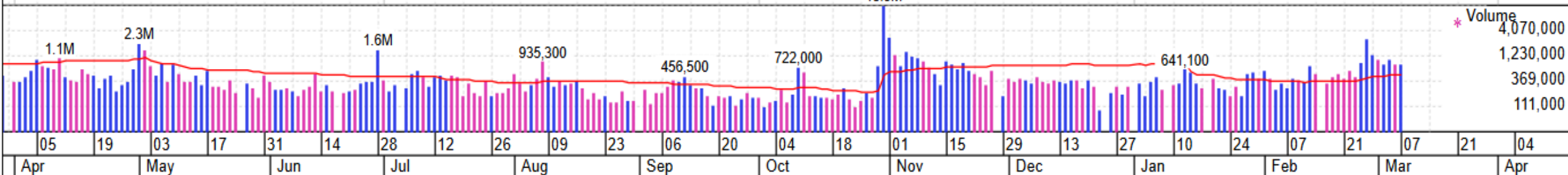
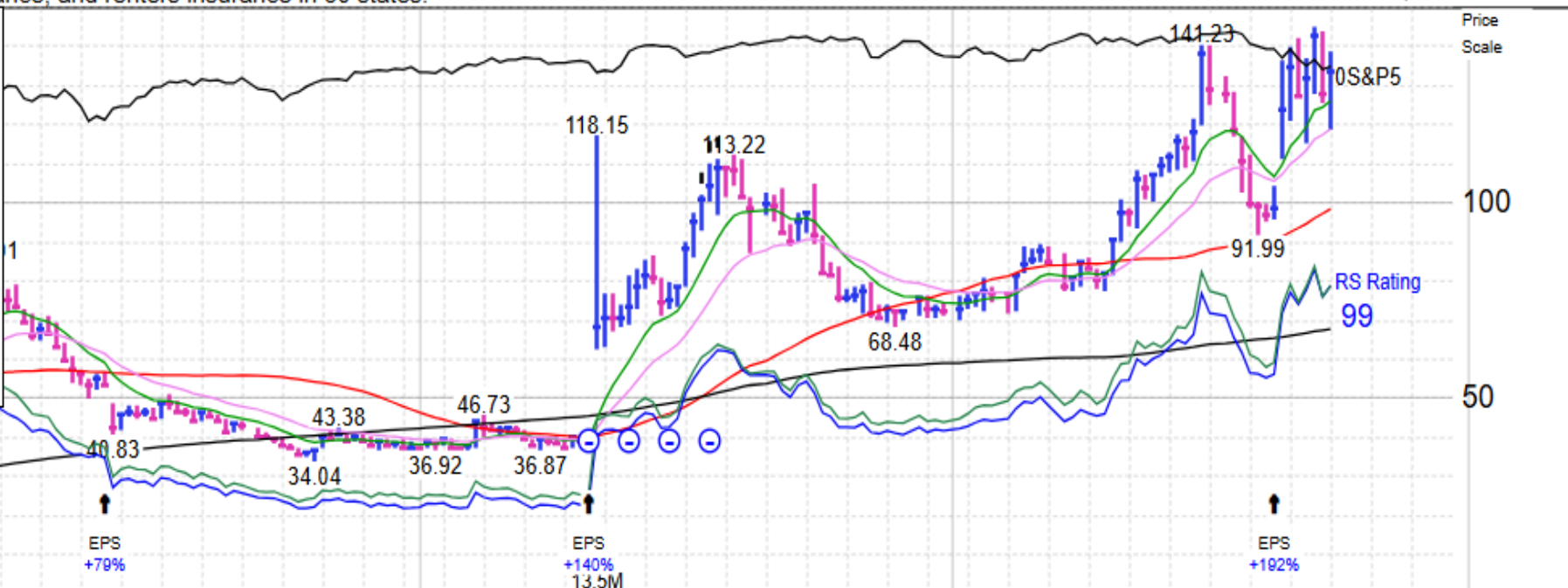
Last Updated:  
4:00 PM ET 03/07/25

\$133.88 +5.56  
+4.33%  
Volume 847,800 +68%

Offers app-based automobile insurance, homeowners insurance, and renters insurance in 50 states.

Year (Dec)	EPS (\$)	Price(\$) High Low
2018	-5.04	
2019	-20.32	
2020	-26.08	530 244
2021	-37.62	461 51
2022	-19.12	61 4
2023	-9.21	14 3
2024	1.99	118 7
2025	-0.42	est -121% ▼
2026	0.81	est 292% ▼

EPS Rating	80
Group RS Rating	A-
SMR Rating	A
Acc/Dis Rating	A
Composite Rating	99
Timeliness Rating	A
Growth Rate	N/A
P/E	70 (2.9 X SP)
Mkt Cap	\$2.0B(\$1.4B)
Shares	15M(11M)
Funds	36%



Qtr Ended March 31, 2024				Qtr Ended June 30, 2024				Qtr Ended September 30, 2024				Qtr Ended December 31, 2024 *				EPS Due 4/30
-0.41	vs	-2.17	+81%	-0.50	vs	-2.39	+79%	1.19	vs	-2.96	#+140%	1.55	vs	-1.68	#+192%	Earnings (\$)
254.9	vs	70.1	+264%	289.2	vs	74.8	+287%	305.7	vs	115.3	+165%	326.7	vs	194.8	+68%	Sales (\$Mil)
			-2.4%				-2.6%				+6.9%				+8.5%	Pre Tax Margin

# Current Earnings (Quarterly Earnings)

## Agnico-Eagle Mines

Add to List:

Apr21



Agnico-Eagle Mines (AEM) NYSE Mining-Gold/Silver/Gems (8/197)

Average Daily Volume 2,137,200

Market Closed

\$98.79

0.00%

Last Updated:

\$98.79

+0.91  
+0.93%  
+16%

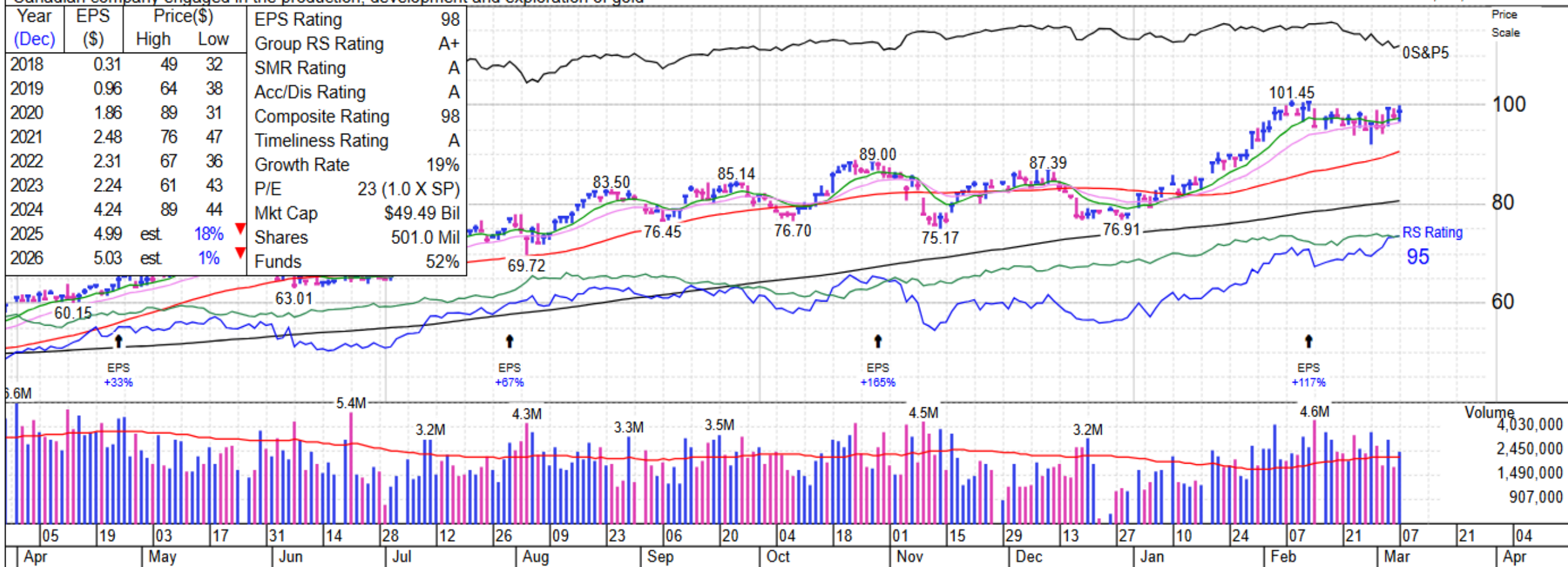
[www.agnicoeagle.com](http://www.agnicoeagle.com)

4:00 PM ET 03/07/25

Volume 2,473,100

Canadian company engaged in the production, development and exploration of gold

Year (Dec)	EPS (\$)	Price(\$) High Low	EPS Rating	98
2018	0.31	49 32	Group RS Rating	A+
2019	0.96	64 38	SMR Rating	A
2020	1.86	89 31	Acc/Dis Rating	A
2021	2.48	76 47	Composite Rating	98
2022	2.31	67 36	Timeliness Rating	A
2023	2.24	61 43	Growth Rate	19%
2024	4.24	89 44	P/E	23 (1.0 X SP)
2025	4.99	est. 18% ▼	Mkt Cap	\$49.49 Bil
2026	5.03	est. 1% ▼	Shares	501.0 Mil
			Funds	52%



Qtr Ended March 31, 2024				Qtr Ended June 30, 2024				Qtr Ended September 30, 2024				Qtr Ended December 31, 2024				EPS Due 4/24
0.76	vs	0.57	+33%	1.07	vs	0.64	+67%	1.14	vs	0.43	+165%	1.26	vs	0.58	+117%	Earnings (\$)
1829.8	vs	1509.7	+21%	2076.6	vs	1718.2	+21%	2155.6	vs	1642.4	+31%	2223.7	vs	1756.6	+27%	Sales (\$Mil)
			+29.3%				+36.8%				+38.9%				+41.2%	Pre Tax Margin



# Current Earnings (Quarterly Earnings)

Tuya ADR (TUYA) NYSE Computer Sftwr-Enterprse (22/197)

Average Daily Volume 4,052,200

Market Closed

\$4.00 -0.03  
-0.74%

Last Updated:

4:00 PM ET 03/07/25

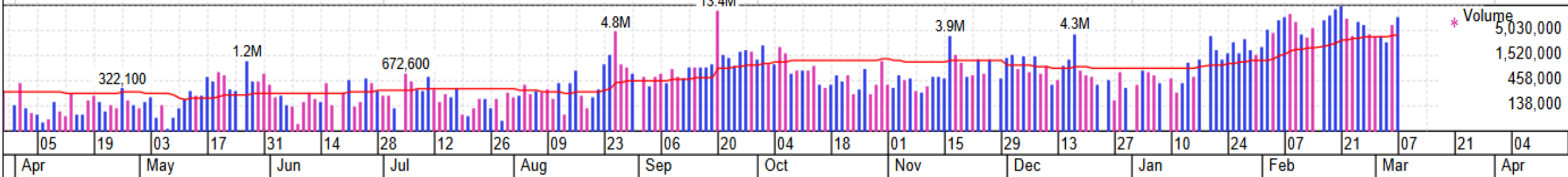
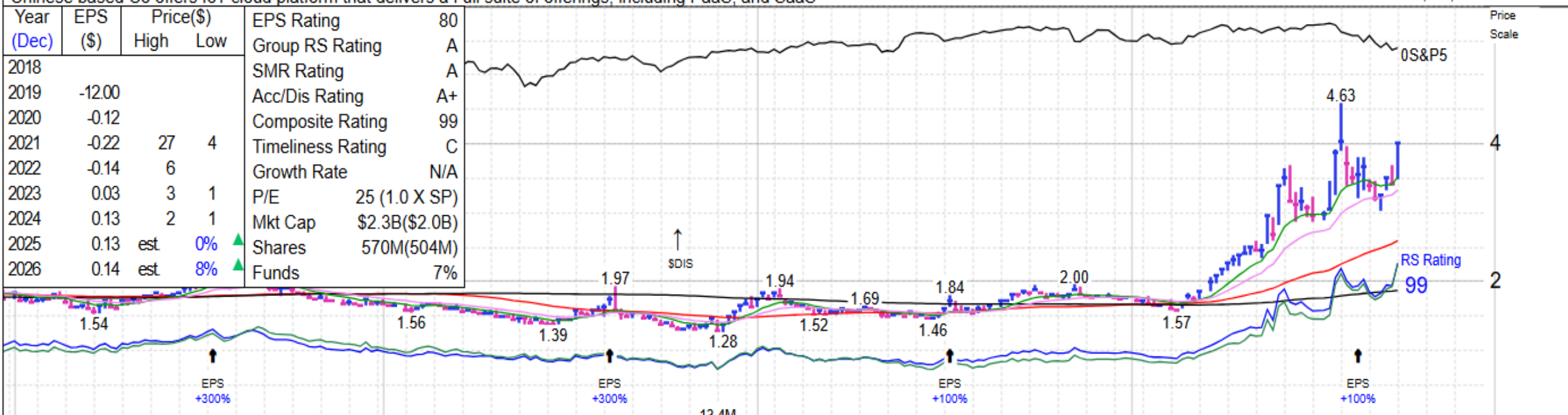
\$4.03 +0.59  
+17.15%

Volume 9,544,200 +136%

[www.tuya.com](http://www.tuya.com)

Chinese based Co offers IoT cloud platform that delivers a full suite of offerings, including PaaS, and SaaS

Year (Dec)	EPS (\$)	Price(\$) High Low	EPS Rating	80
2018			Group RS Rating	A
2019	-12.00		SMR Rating	A
2020	-0.12		Acc/Dis Rating	A+
2021	-0.22	27 4	Composite Rating	99
2022	-0.14	6	Timeliness Rating	C
2023	0.03	3 1	Growth Rate	N/A
2024	0.13	2 1	P/E	25 (1.0 X SP)
2025	0.13 est	0% ▲	Mkt Cap	\$2.3B(\$2.0B)
2026	0.14 est	8% ▲	Shares	570M(504M)
			Funds	7%



Qtr Ended March 31, 2024				Qtr Ended June 30, 2024				Qtr Ended September 30, 2024				Qtr Ended December 31, 2024 *				EPS Due 5/8
0.02	vs	-0.01	#+300%	0.04	vs	0.01	+300%	0.04	vs	0.02	+100%	0.04	vs	0.02	+100%	Earnings (\$)
61.7	vs	47.5	+30%	73.3	vs	57.0	+29%	81.6	vs	61.1	+34%	82.1	vs	64.4	+27%	Sales (\$Mil)
			+21%				+29.2%				+25.1%				+27.5%	Pre Tax Margin



# CAN SLIM

Market Direction

Current Earnings (Quarterly Earnings)

Annual Earnings

# Annual Earnings

Zai Lab ADR

Add to List:

Apr21

Zai Lab ADR (ZLAB) NASDAQ Medical-Biomed/Biotech (64/197)  
[www.zailaboratory.com](http://www.zailaboratory.com)

Average Daily Volume 851,900

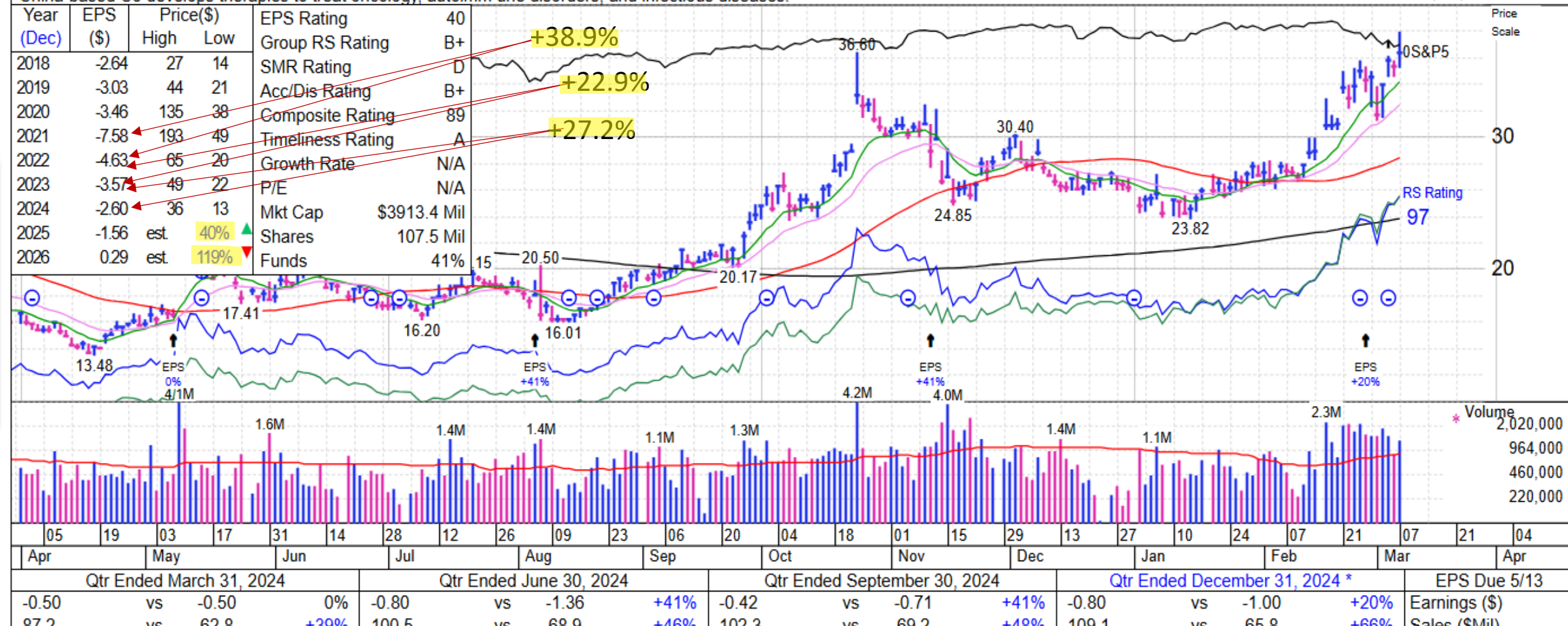
Market Closed  
7:54 PM ET 03/07/25

\$36.35 -0.07  
-0.19%

Last Updated:  
4:00 PM ET 03/07/25

\$36.42 +1.03  
+2.91%  
Volume 1,312,300 +54%

China-based Co develops therapies to treat oncology, autoimmune disorders, and infectious diseases.





# CAN SLIM

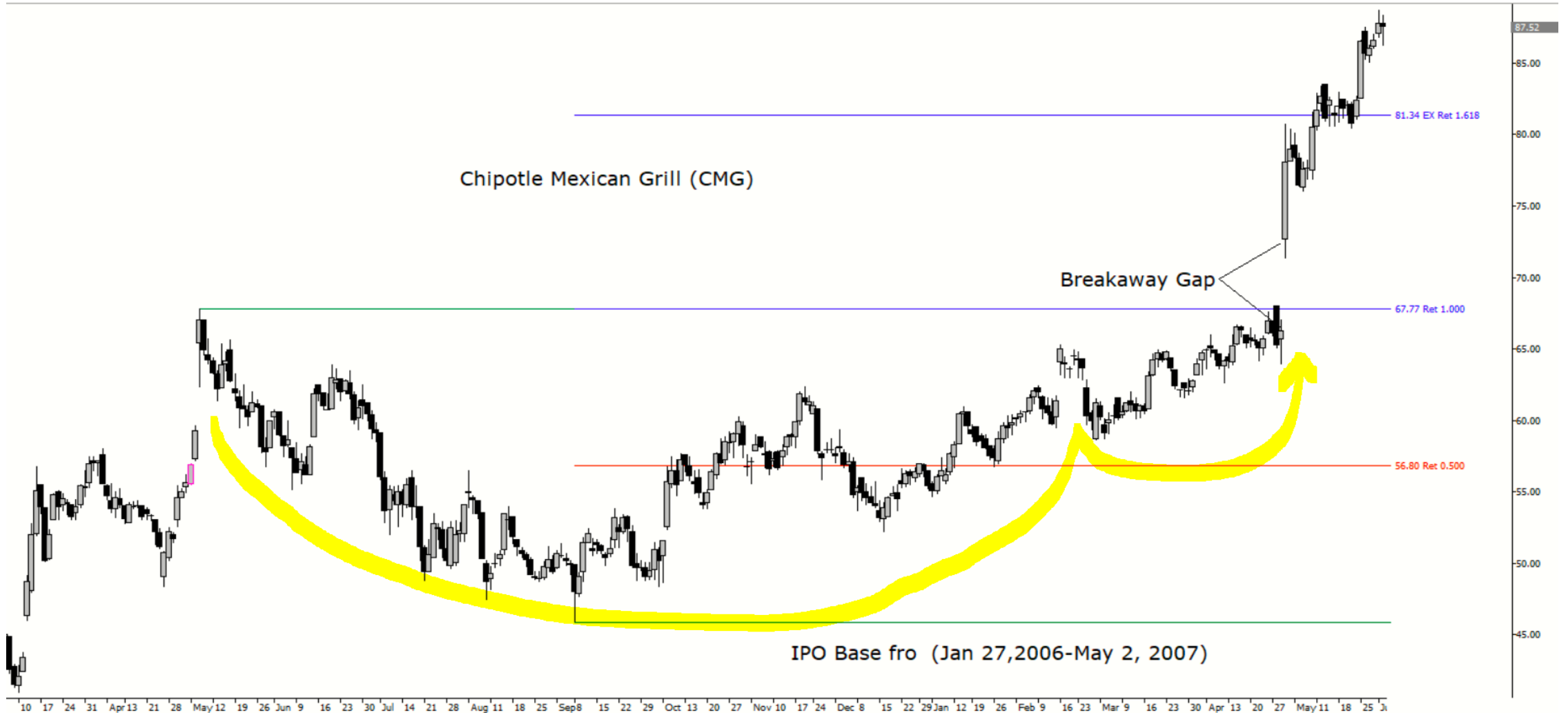
Market Direction

Current Earnings (Quarterly Earnings)

Annual Earnings

New (Initial Public Offerings IPO) (Special Purpose Acquisition Company SPAC)

Chipotle Mexican Grill (CMG)  
IPO Cup-with-handle base



# Chipotle Mexican Grill (CMG) IPO Base (Monthly Chart)



# Alibaba Group Holding Ltd (BABA) IPO Cup-with-handle base



# Alibaba Group Holding Ltd (BABA)

## IPO Cup-with-handle base





# Something New

MA1 = 33.77  
MA2 = 36.01  
MA3 = 37.64  
MA4 = 34.39

Rubrik Inc. (RBRK)

Computer Software Security



# Something New

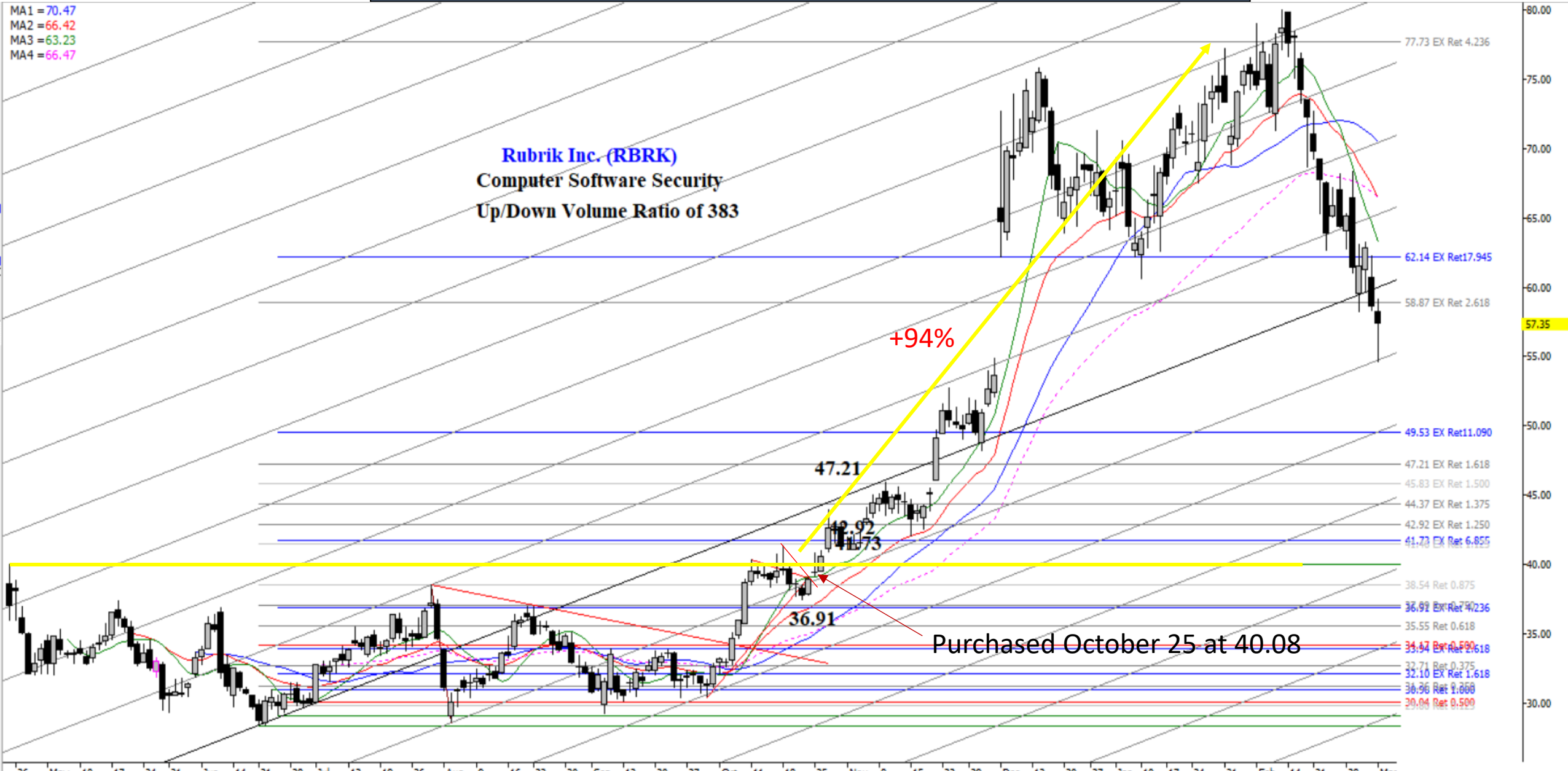
MA1 = 33.77  
MA2 = 36.01  
MA3 = 37.64  
MA4 = 34.39

Rubrik Inc. (RBRK)

Computer Software Security



# Something New

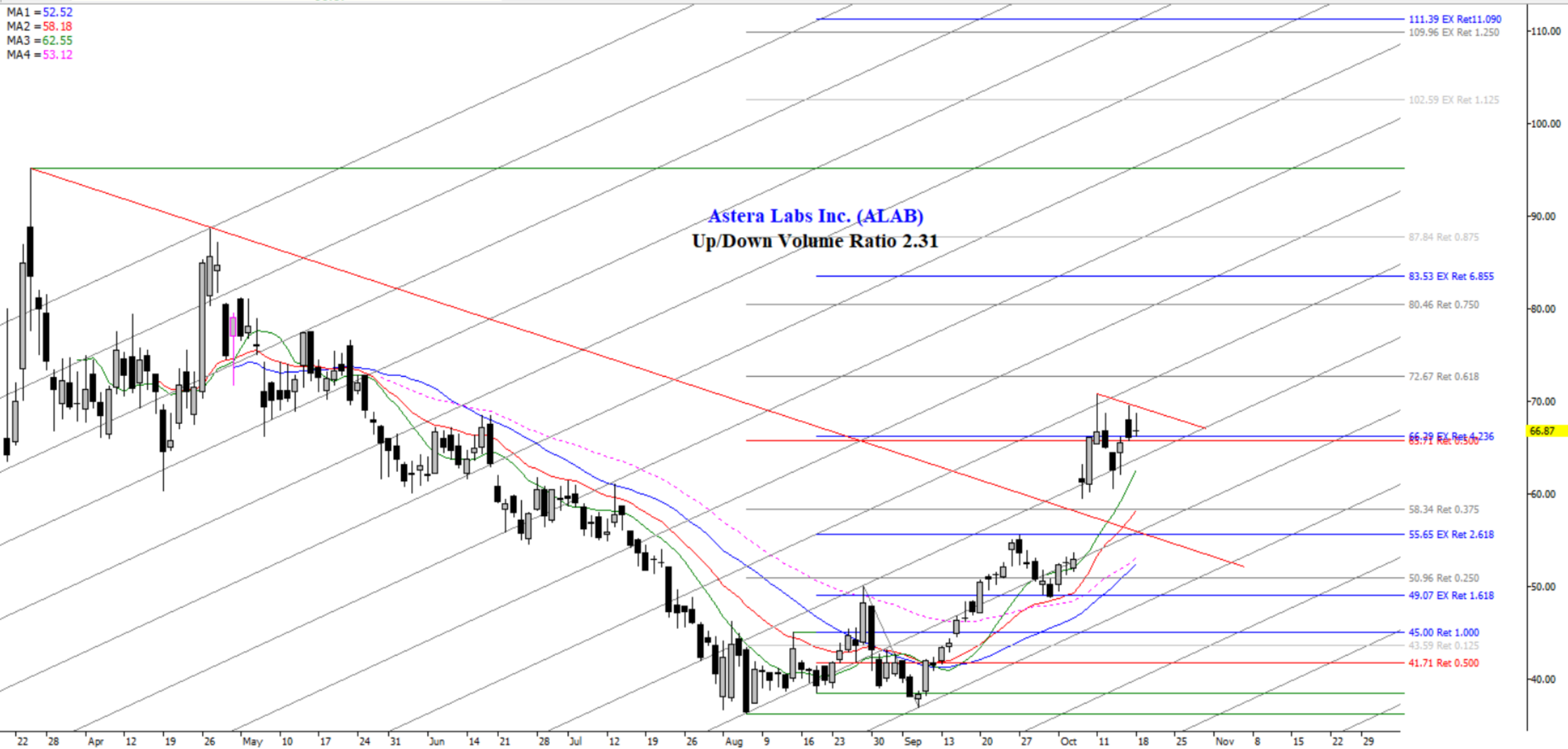


# Something New

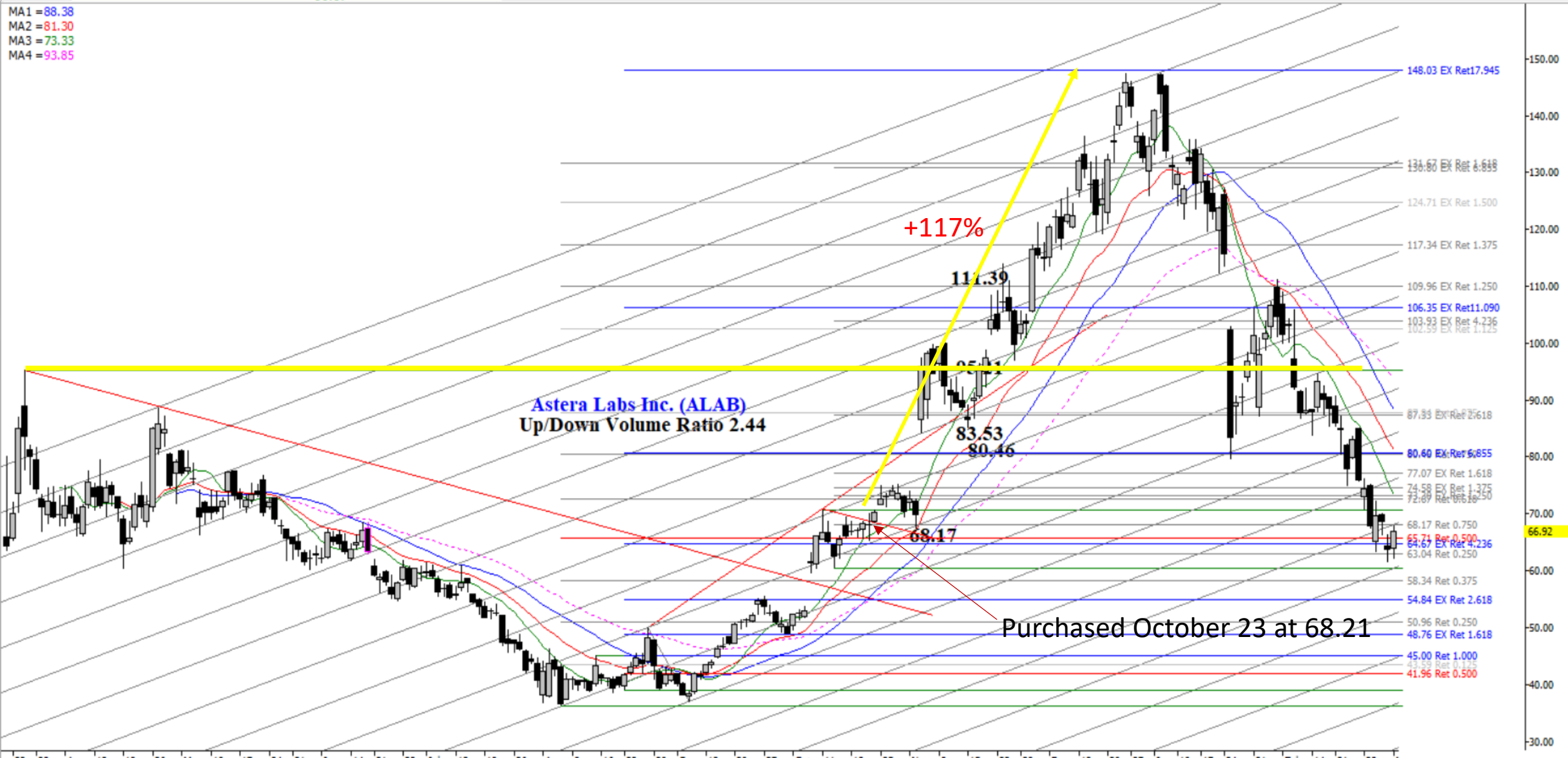
## Rubrik Inc. (RBRK)

[illegible]

# Something New



# Something New



# Something New

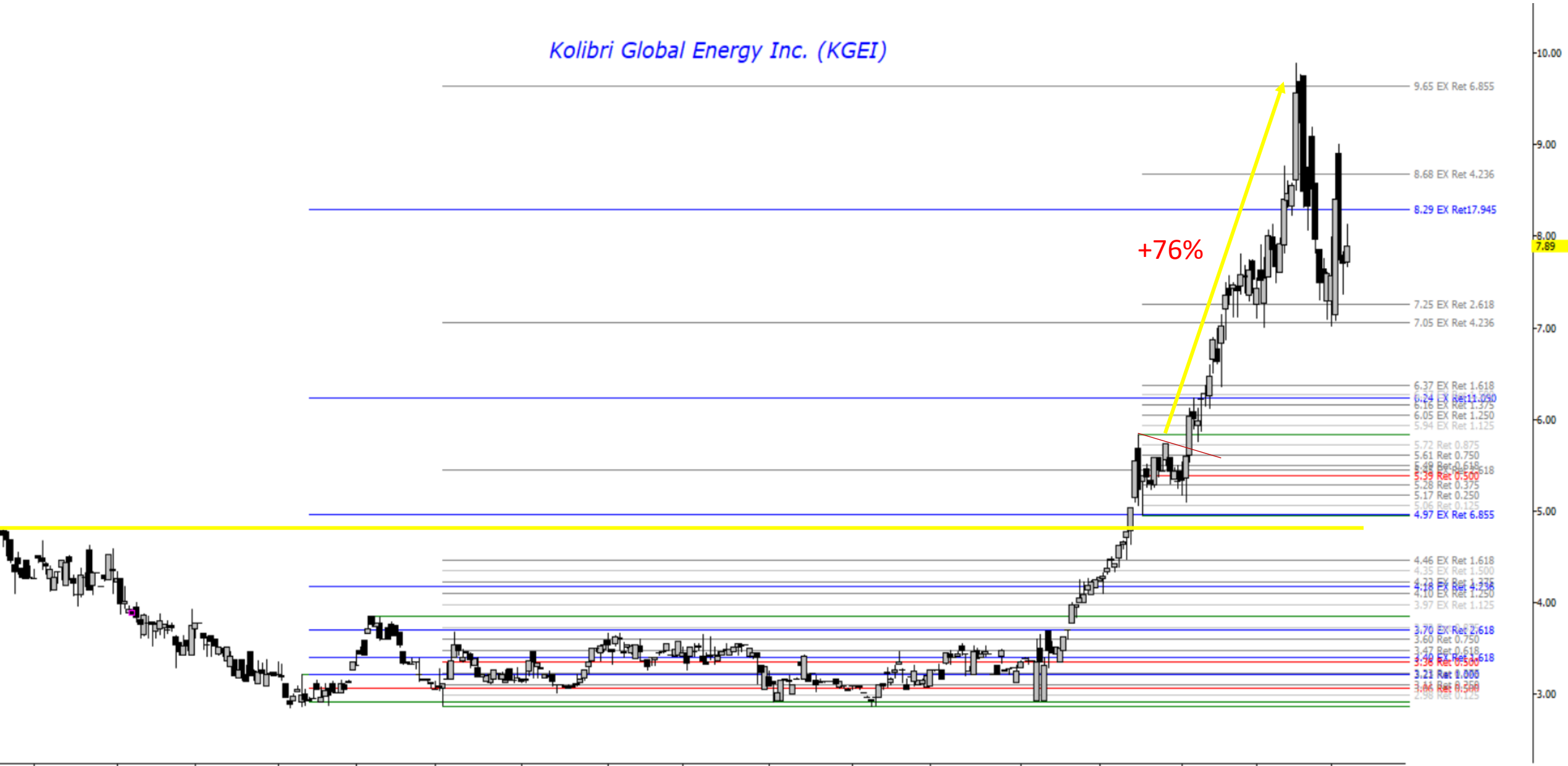
## Astera Labs (ALAB)





# Something New

*Kolibri Global Energy Inc. (KGEI)*





# Something New

*Park Ha Biological Technology Co. (PHH)*



# Something New

Park Ha Biological Technology Co. (PHH)

8.00										8.00
7.50					X					<<7.69
7.00					X					7.00
6.50	X		X		X					6.50
6.00	X	1	X	2	X					6.00
5.50	X	O	X	O	X					5.50
5.00	X	O	X	O	3					5.00
4.75	X	O	X	O						4.75
4.50	X	O	X							4.50
4.25	X	O								4.25
4.00	X									4.00
3.75										3.75



# CAN SLIM

Market Direction

Current Earnings (Quarterly Earnings)

Annual Earnings

New (Initial Public Offerings IPO) (Special Purpose Acquisition Company SPAC)

Supply & Demand for shares outstanding (Volume)



# Primary Indicators of technical analysis

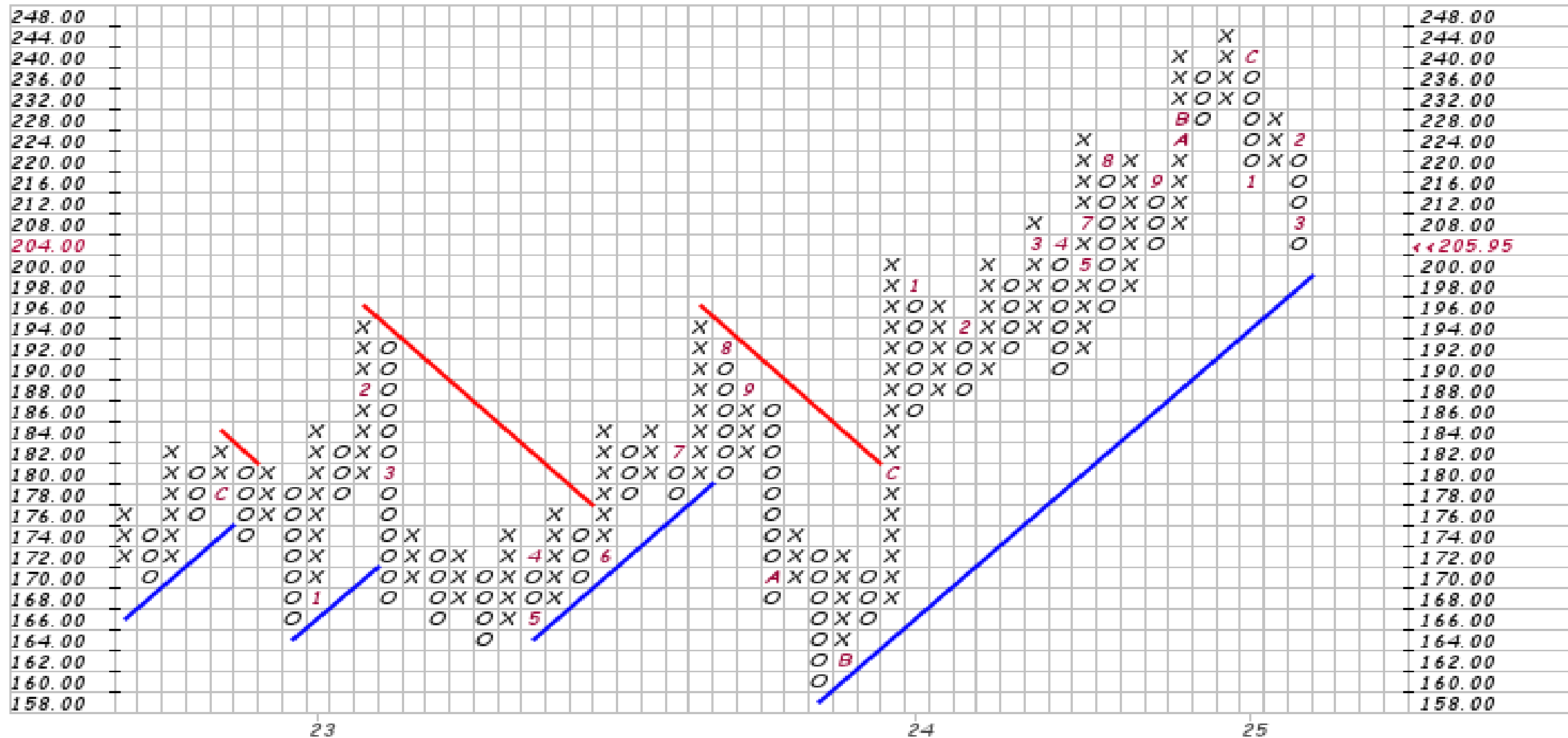
PRICE

VOLUME

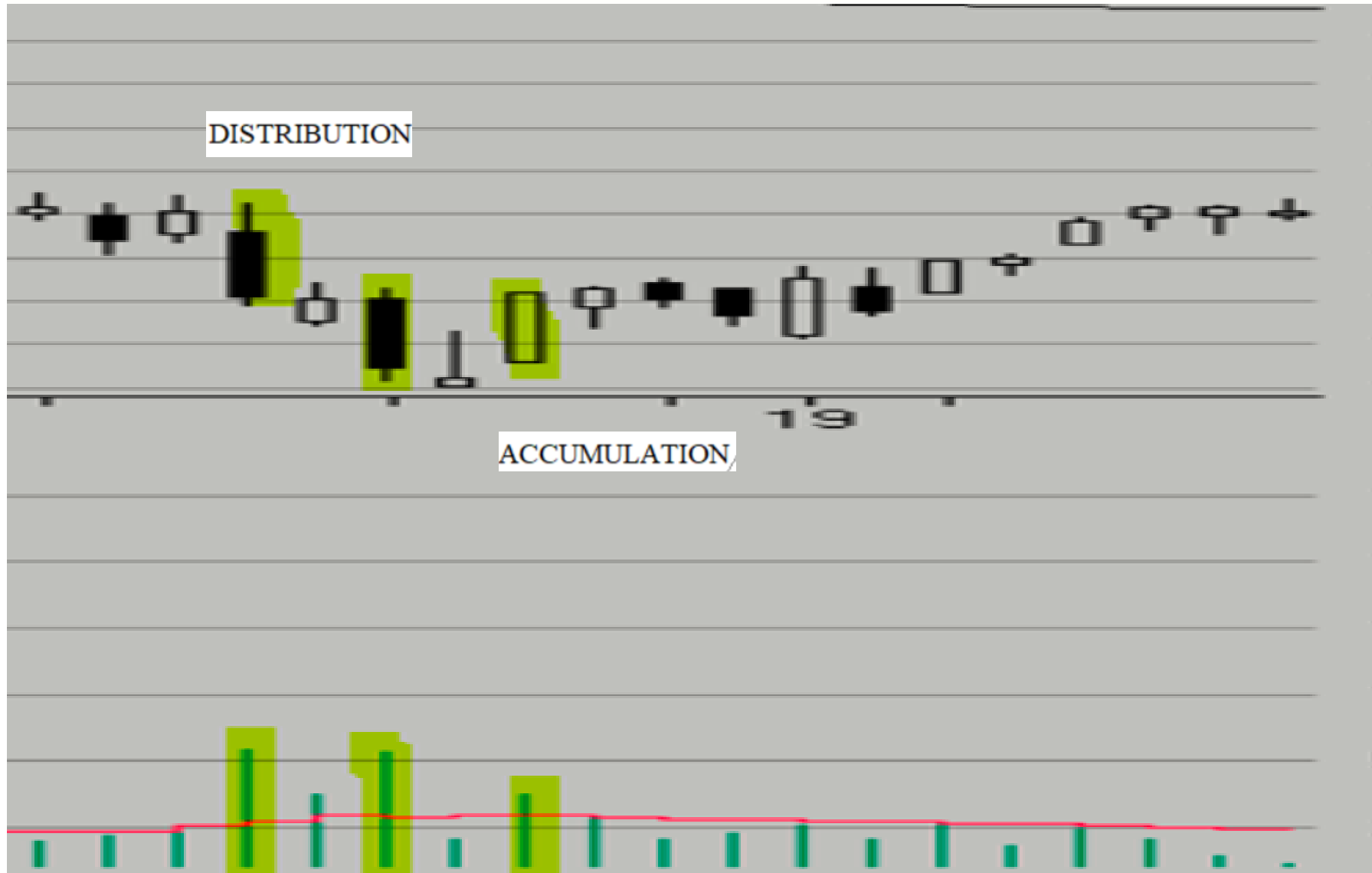
TIME

# Supply & Demand

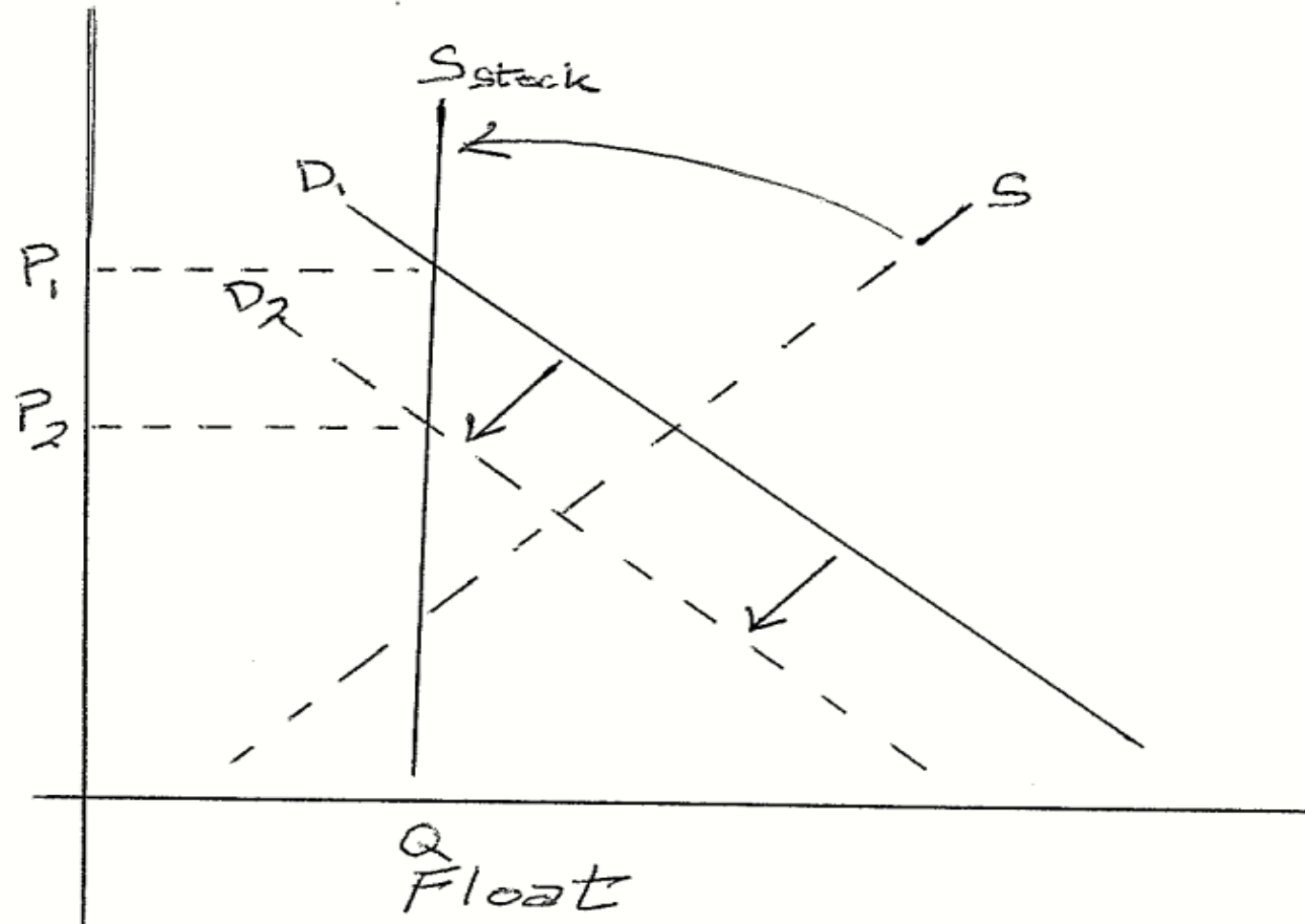
## Russell 2000 Small Cap Index (IWM)



# Supply & Demand



## Supply and Demand in the Stock Market



# Supply & Demand

**Nvidia Corp. (NVDA)**

**Closed at 112.69/Share**

Market Capitalization	\$2749.64 Billion
Shares in Float	23180.0 Million
Shares Outstanding	24.4 Billion

**Nvidia Corp. (NVDA)**

**Market Cap on January 7 at 153.13**

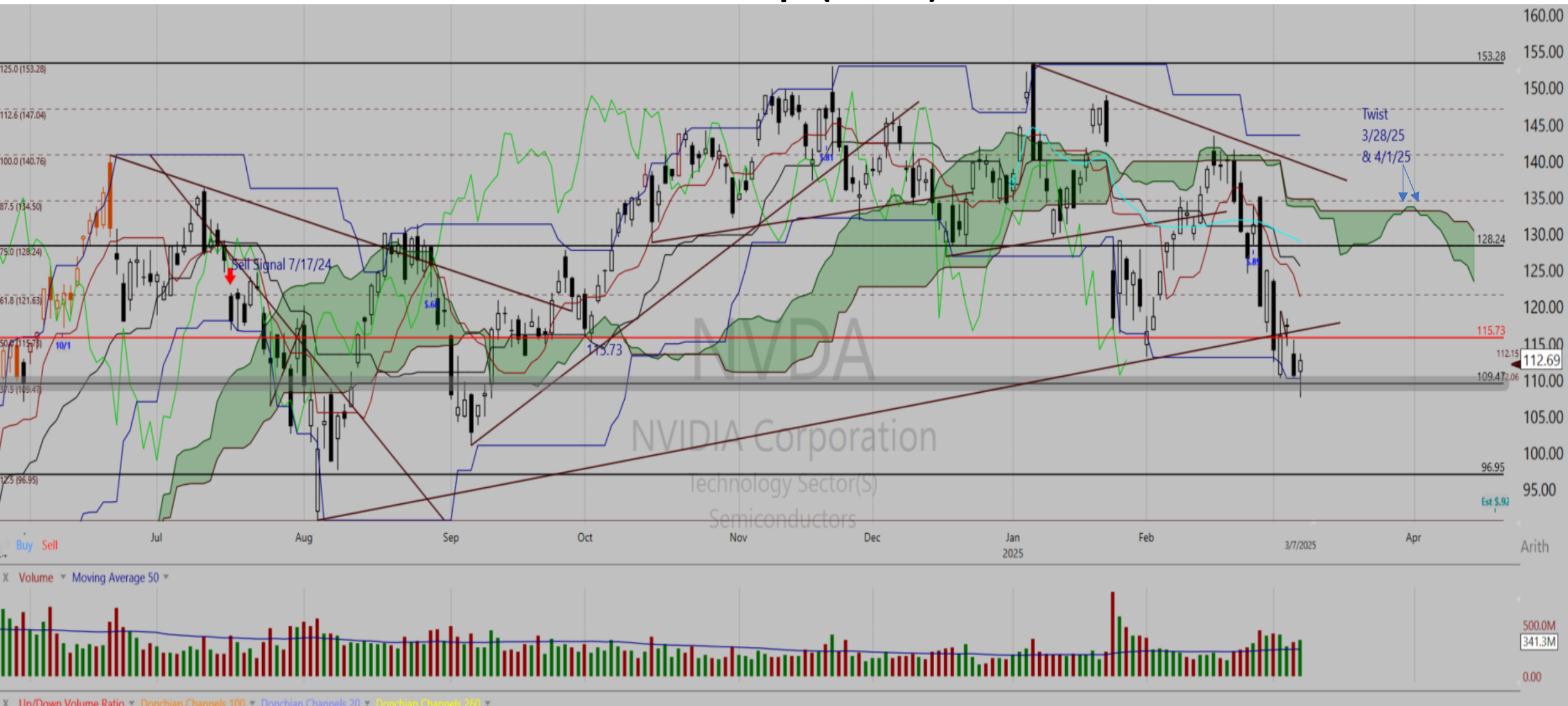
Market Capitalization \$3,736.37 Billion

**Down -\$1 Trillion from High**



# Supply & Demand

## Nvidia Corp. (NVDA)



# Supply & Demand

## Arm Holdings PLC (ARM) Point & Figure





# CAN SLIM

Market Direction

Current Earnings (Quarterly Earnings)

Annual Earnings

New (Initial Public Offerings IPO) (Special Purpose Acquisition Company SPAC)

Supply & Demand for shares outstanding (Volume)

Institutional Sponsorship



# CAN SLIM

## **What are Institutions?**

Mutual Funds

Hedge Funds

Banks

Family Offices

Insurance Companies

***Big Money Moves Stocks!***

78% of all buying activity is made by institutional buyers

# Up/Down Volume Ratio

It's a metric derived by dividing a stock's **volume** on **up** days by its **volume** on **down** days during the past 50 days.

A **ratio** greater than 1.0 shows more **volume** on the upside than on the downside.

Greater than 1 > Stock is under institutional accumulation

Less Than < 1 Stock is under institutional distribution

# Alibaba Group (BABA)

## Under Institutional Accumulation





# Tuya Inc. (TUYA)

## Up/Down Vol Ratio of 2.00



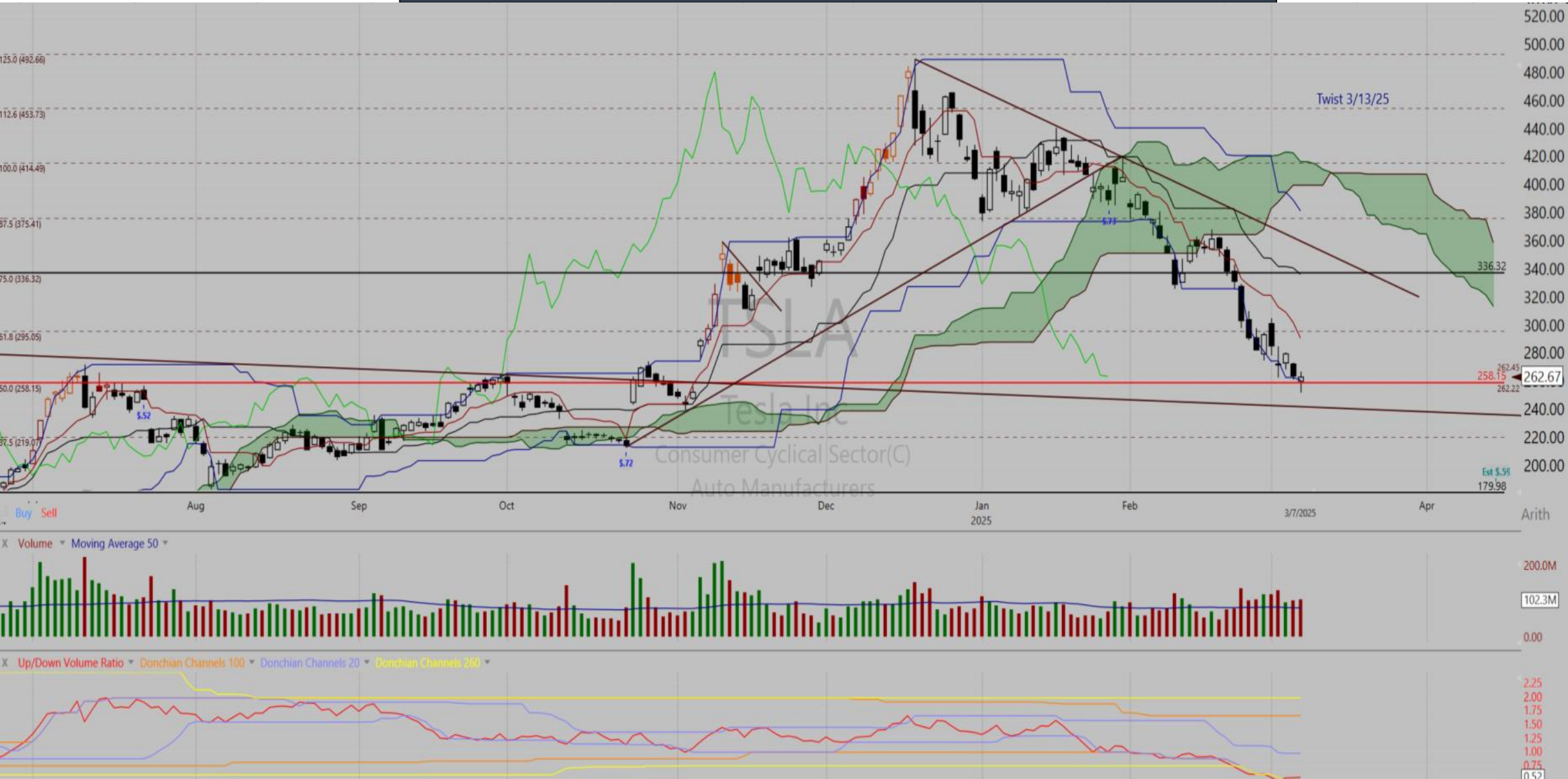
MicroStrategy Inc. (MSTR)  
Up/Down Vol Ratio of 0.70





# Tesla Inc. (TSLA)

Up/Down Vol Ratio of **0.52**





# CAN SLIM

Market Direction

Current Earnings (Quarterly Earnings)

Annual Earnings

New (Initial Public Offerings IPO) (Special Purpose Acquisition Company SPAC)

Supply & Demand for shares outstanding (Volume)

Institutional Sponsorship

Leader Vs. Laggard (Sectors, Industry Groups, Individual Stocks)

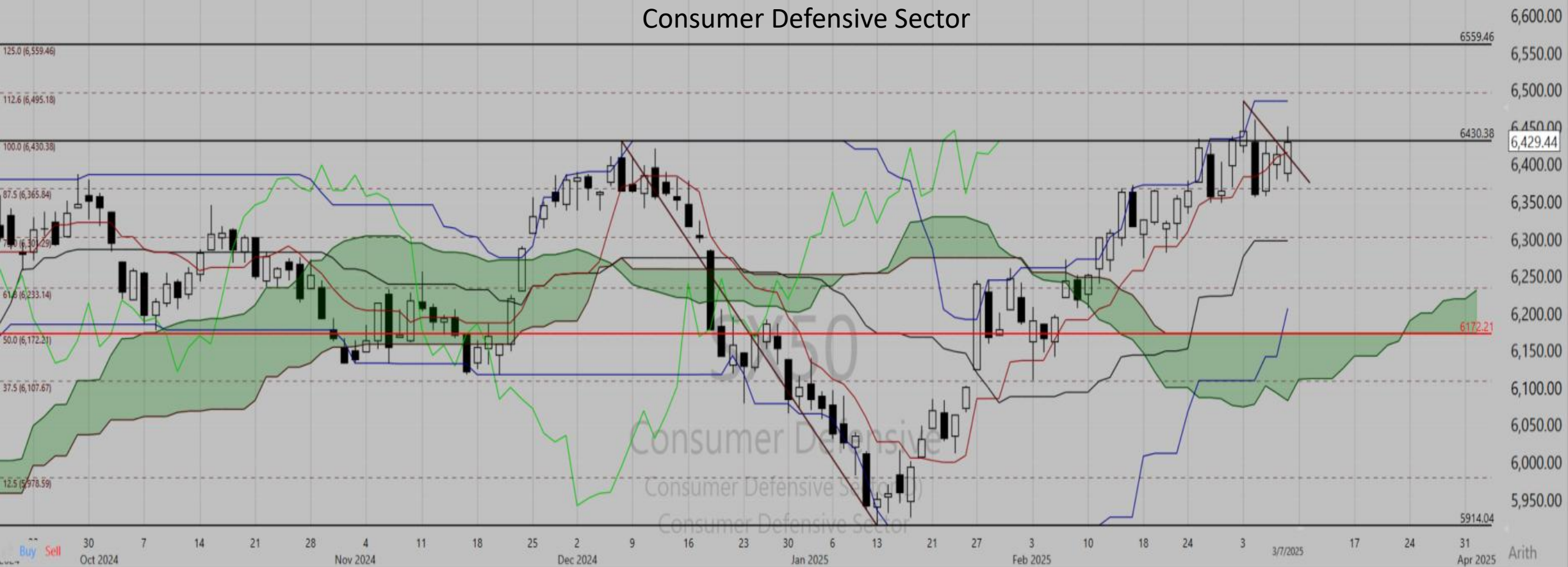
# Leader (CAN SLIM)

40 Groups (6 mos.)			
Day's best blue, worst red. Full			
Group Industry Name	Composite Rating	YTD % Chg	Days % Chg
Oil&Gas-Royalty Trust		-21.5	-4.9
Intnt-Netwkr Sltms	94	+9.6	-0.2
Consumer Svc-Education	92	+3.2	-0.8
Comptr Sftwr-Edu	..	-14.8	+1.5
Comptr-Tech Svcs	84	+6.0	+1.9
Energy-Als/Other	77	-7.7	+0.8
Internet-Content	92	-3.6	-0.5
Transport-Airline	81	-16.3	-2.0
Mining-Gld/Silvr/Gms	96	+17.5	+0.9
Media-Diversified	87	+5.8	-1.1
Leisure-Mvies & Rel	90	-0.5	-1.4
Telcom Svc-Wireles	83	+13.8	+1.1
Comptr Sftwr-Mdcl	87	+9.1	+0.3
Fin-Invest Bnk/Bkrs	89	-7.2	-0.6
Comptr Sftwr-Scrity	91	-0.1	0.0
Retail-Drug Stores	..	+17.1	+3.0
Telcom-Cbl/Sat Eqp	85	-5.3	-1.0
Banks-Foreign	86	+3.5	+0.5
Financial Svc-Spec	89	-3.0	0.0
Medical-Services	82	+11.6	0.0
Finance-Cons Loan	87	+2.8	+0.4
Cmp Sftwr-Spc-Entr	89	-9.5	-1.3
Elec-Contract Mfg	85	-8.7	+2.5
Comptr Sftwr-Entr	87	-10.7	-0.3
Aerospace/Defense	89	+0.1	+0.2
Machinery-Farm	..	+11.4	+2.8
Retail-Restaurants	86	-6.3	+0.4
Elec-Misc Products	83	-7.8	+1.8
Steel-Spcity Alloys	..	-1.3	-2.3
Tobacco	91	+11.8	-0.1





# Consumer Defensive Sector



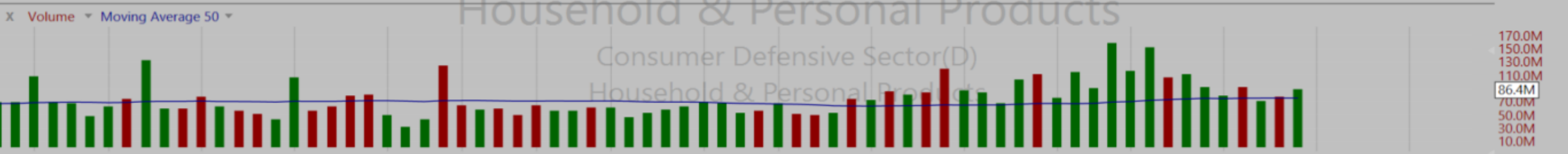
X Volume ▾ Moving Average 50 ▾



X Up/Down Volume Ratio ▾ Donchian Channels 100 ▾ Donchian Channels 20 ▾ Donchian Channels 260 ▾

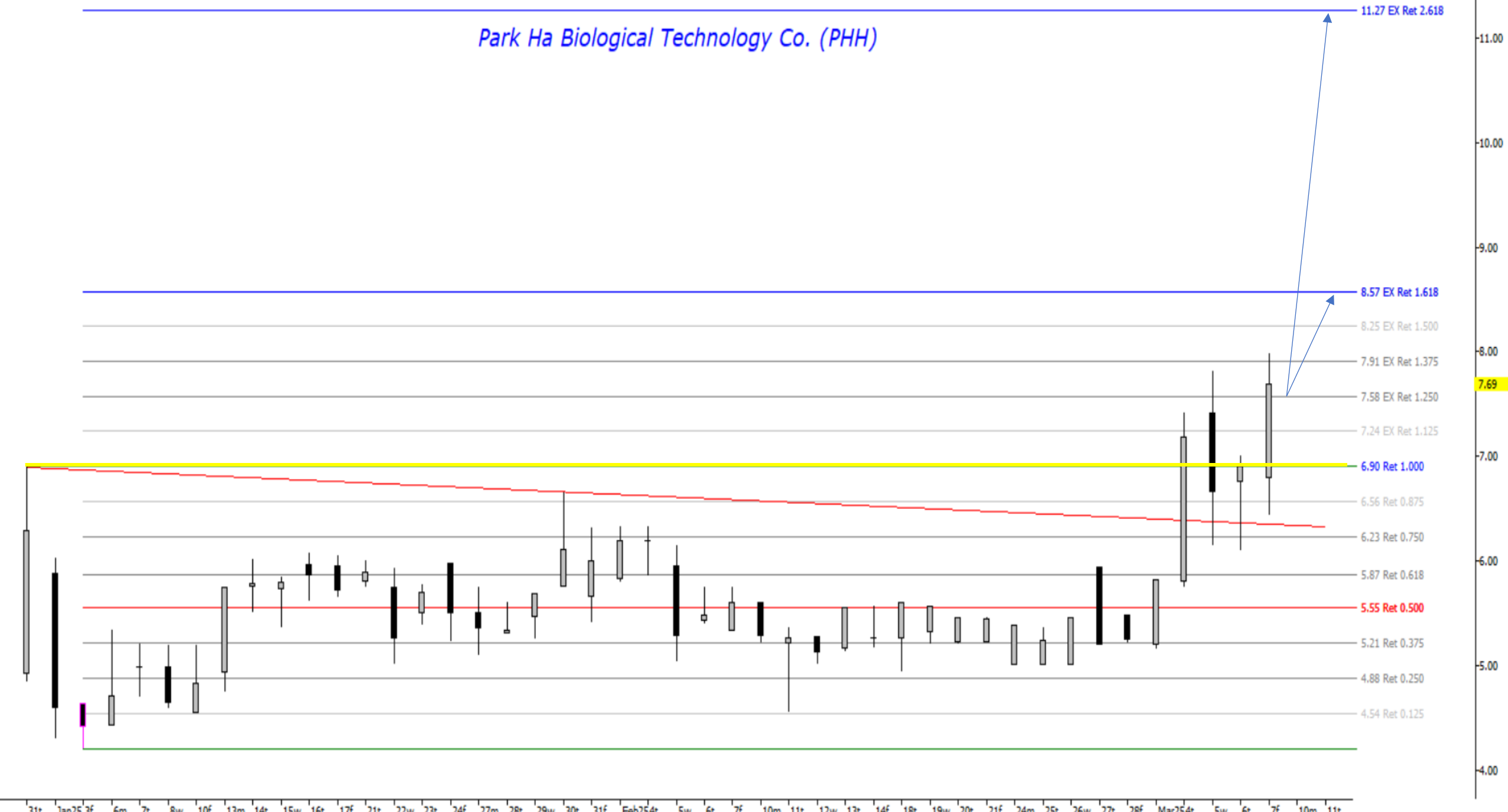


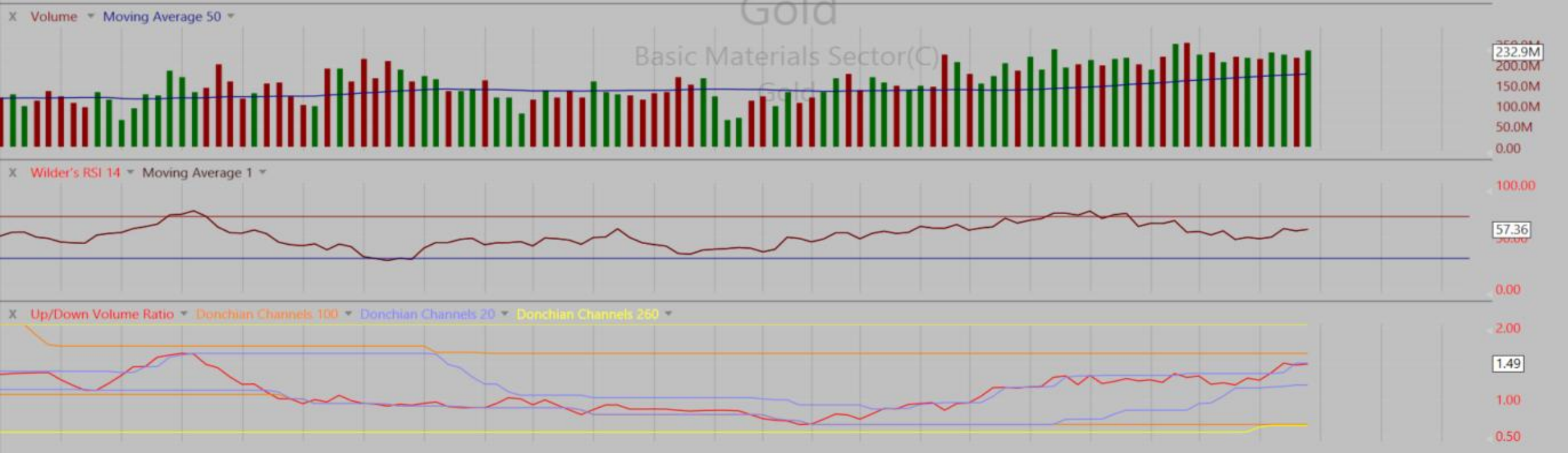
# Household & Personal Products Industry group





# Park Ha Biological Technology Co. (PHH)









# Laggard (CAN SLIM)

Rank This Wk	3 Wks Ago	6 Wks Ago	Group Industry Name	Composite Rating	YTD % Chg	Days % Chg
179	163	136	Comptr Sftwr-Dsktp	..	-2.0	+0.3
180	175	94	Medical Supplies	..	-14.0	+0.8
181	115	152	Retail-Cnsmr Elec	..	-11.7	+0.6
182	176	172	Office Supplies Mfg	..	-3.4	+1.2
183	196	176	Media-Periodicals	..	-21.4	-4.2
184	148	139	Transportation-Trck	..	-13.1	-0.3
185	171	170	Bldg-Wood Prds	..	-9.5	+0.5
186	190	194	Media-Books	..	-4.3	+3.3
187	189	190	Beverages-Alcoholic	..	-12.6	+2.0
188	183	184	Chemicals-Basic	..	-7.8	+1.0
189	188	188	Oil&Gascdn Expl Pro	..	-12.5	+1.4
190	97	12	Food-Dairy Products	..	-13.8	+2.2
191	168	53	Apparel-Shoes & Rel	63	-21.3	-1.8
192	182	166	Retail/Whlsle-Jwlry	..	-11.9	+0.2
193	191	195	Med-Long-Trm Care	..	-6.3	0.0
194	192	182	Bldg-Rsident/Comm	70	-8.6	-1.2
195	193	189	Oil&Gas-Drilling	..	-18.6	+3.5
196	194	173	Comm Svc-Doc Mgmt	..	-15.8	+2.1
197	197	197	Retail Whlsle (Offc Sup	..	-22.1	+3.9

# Technology Sector



# Consumer Cyclical

